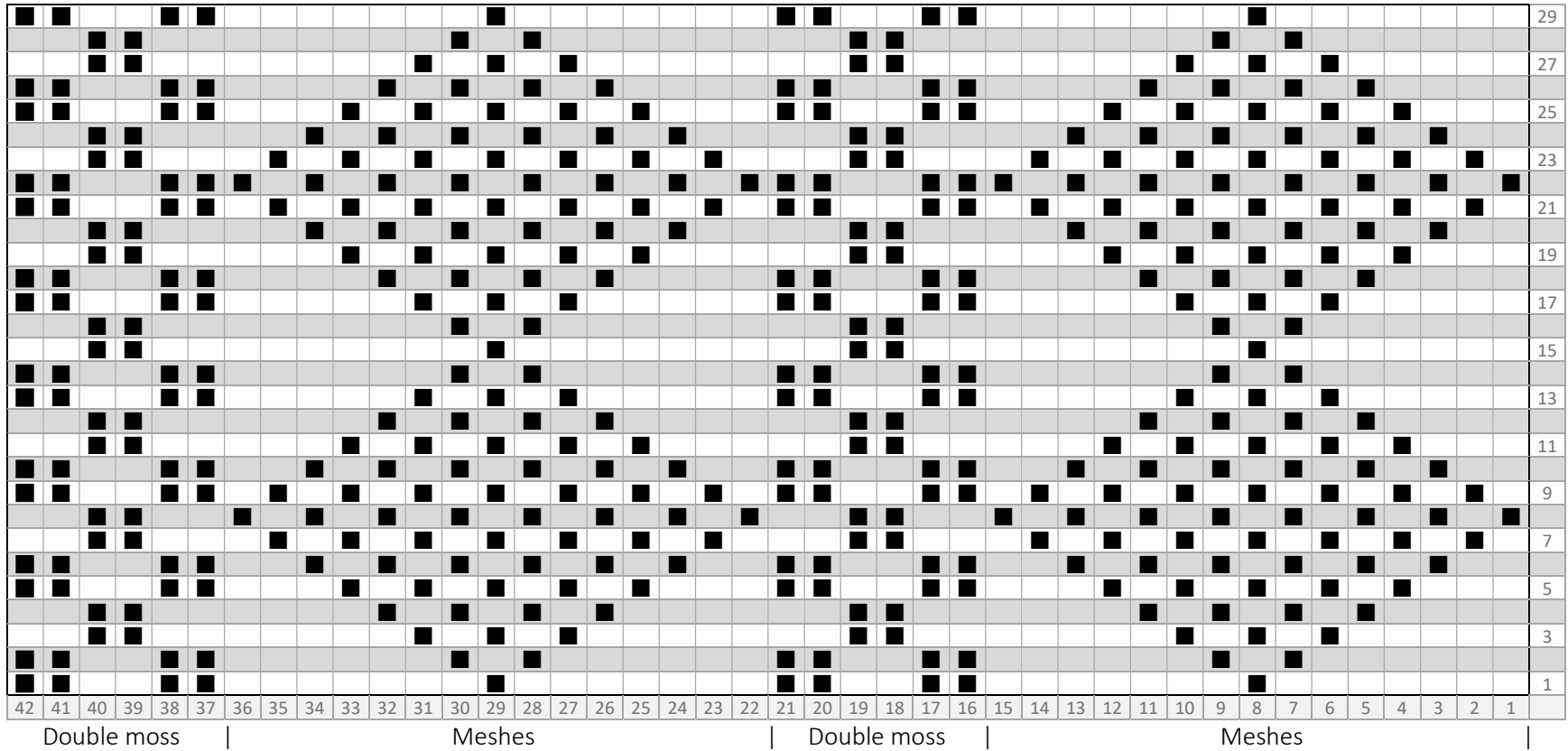


GP100 Eliza West's meshes and double moss gansey for Harry Billy

Sheringham

■ = purl stitch on the right side (and knit stitch on the wrong side)

Gansey: SHMMT : 2017.2



Martin Warren martin.warren@talktalk.net and Val Smith



Attribution-NonCommercial
CC BY-NCJUD



20230221_133731.jpg

Martin Warren martin.warren@talktalk.net and Val Smith



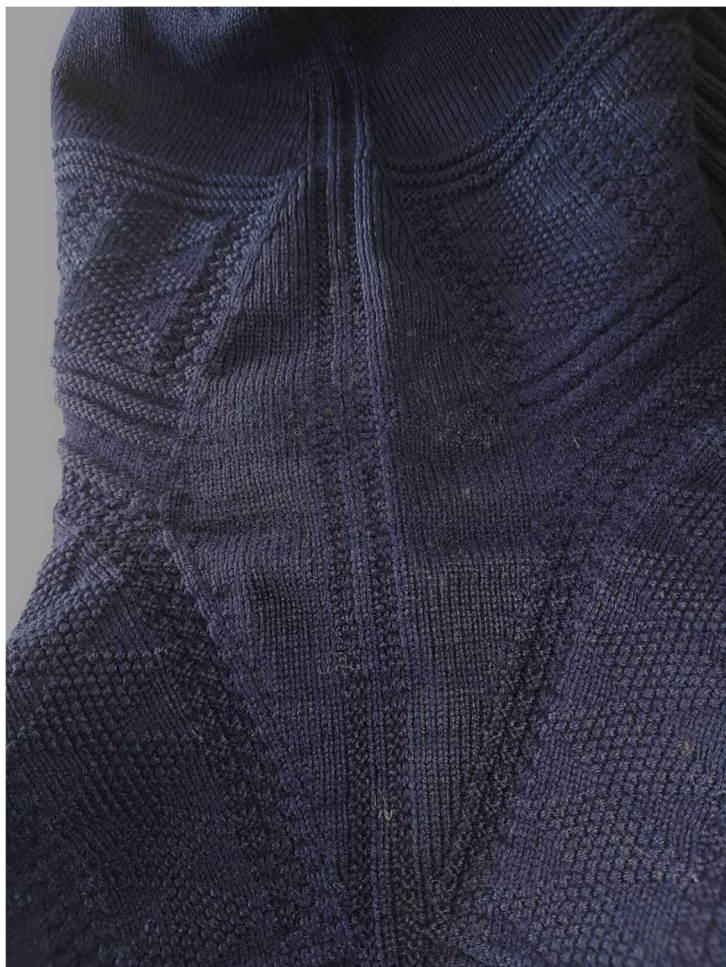
Attribution-NonCommercial
CC BY-NCJUD



A quintessential Sheringham gansey, quite small (34-inch chest), very fine, tension 11.5 spi by measurement, with a yoke of meshes (diamonds) and double moss stitch; exquisitely evenly knitted. The false seams are garter stitch 2 sts wide, either side of two plain stitches (see chart below). The sleeves are very nicely designed, beginning with a single rig, then a short gap of plain before the arm band begins with three rigs, then 3 meshes and finishing with 3 rigs. Arms decrease every 6 rows.

The button at the neck is a little unusual for Sheringham. It is a Scottish influenced detail, picked up through friendships with herring lasses that Eliza West met each season at Great Yarmouth (information from an oral history recording by her daughter Hazel Cheney). This allows the neck to be both tall and tight but easy to get over the head: something that is perhaps more important when the gansey is as small as this is.





Left: 20230221_133200.jpg

Below: 20230221_133957.jpg



Martin Warren martin.warren@talktalk.net and Val Smith



Attribution-NonCommercial
CC BY-NCJUD

Dimensions and tension

Meshes 9 x 15 sts 135 sts.

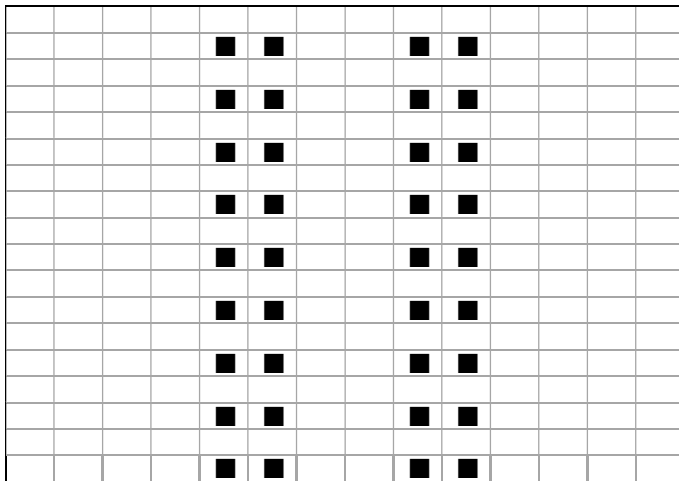
Double moss 10 x 6 sts 60 sts.

False seam 6 sts.

201 sts.

Front and back 402 sts. (100 ribs in the welt, two stitches spare)

The chest is 34 inches, so tension = $402 / 34 = 11.8$ by calculation but measured 46 sts over 4 inches = 11.5 spi on stocking stitch.



The false seams are two columns of reverse garter stitch*.



Martin Warren martin.warren@talktalk.net and Val Smith



Attribution-NonCommercial
CC BY-NCJUD

* It makes little or no difference when knitting in the round whether the seam stitch is garter stitch or reverse garter stitch, but we argue to when starting the false seam after the welt she began the seam stitches with a row of purls, which, technically, is reverse garter stitch.

Martin Warren martin.warren@talktalk.net and Val Smith



Attribution-NonCommercial
CC BY-NCJUD