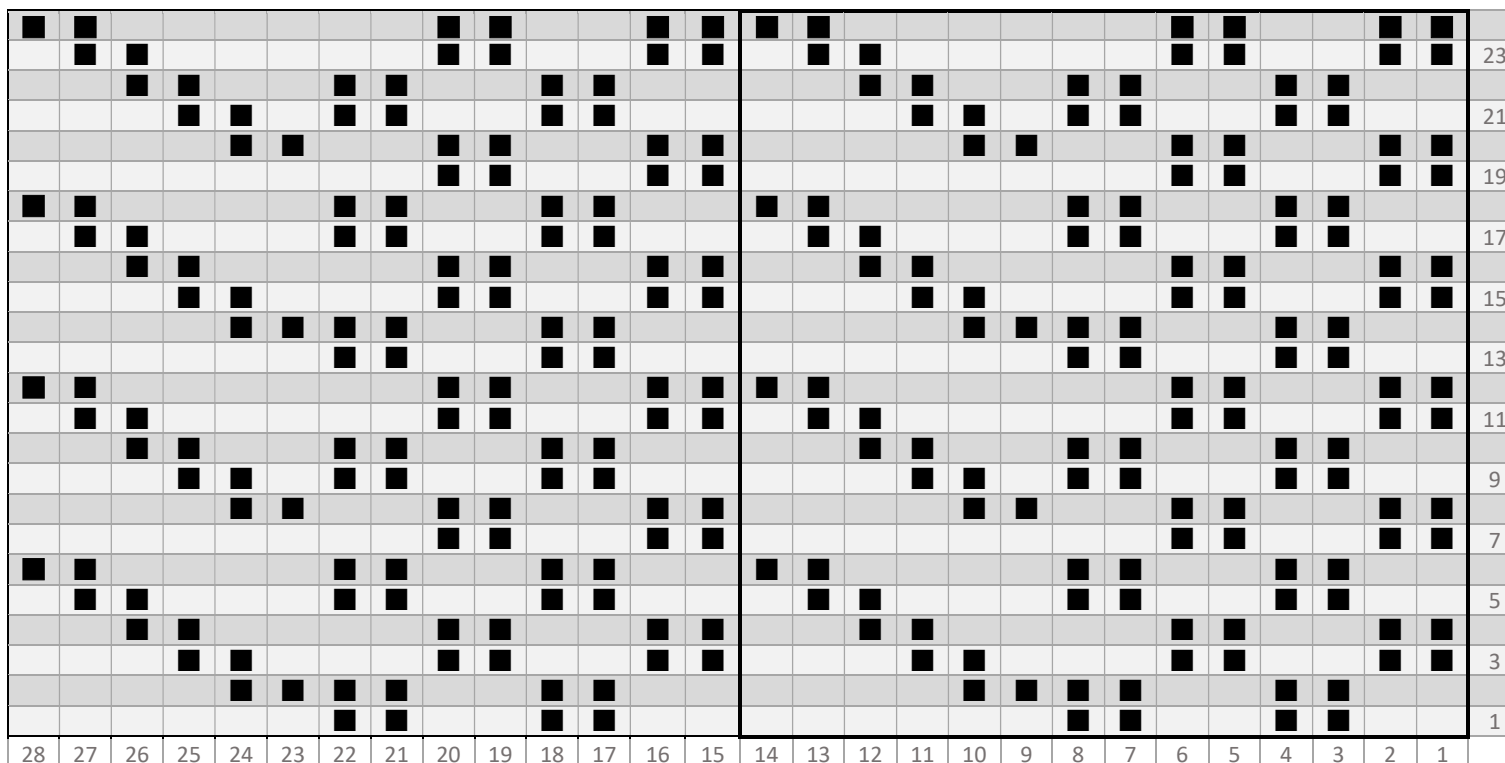


GP13 Charlie Chicken Grice's diagonal bars and double moss stitch gansey

Sheringham

■ = purl stitch on the right side (and knit stitch on the wrong side)

Photo: CRRMU : 2008.14.459



Sheringham 1922

Estimated tension: 9.5 sts per inch

Martin Warren martin.warren@talktalk.net and Val Smith



Attribution-NonCommercial
CC BY-NCJUD



Swatch by Val Smith in West Yorkshire Spinners, Signature 4 ply 'Dusty Miller'

Martin Warren martin.warren@talktalk.net and Val Smith



Attribution-NonCommercial
CC BY-NCJUD

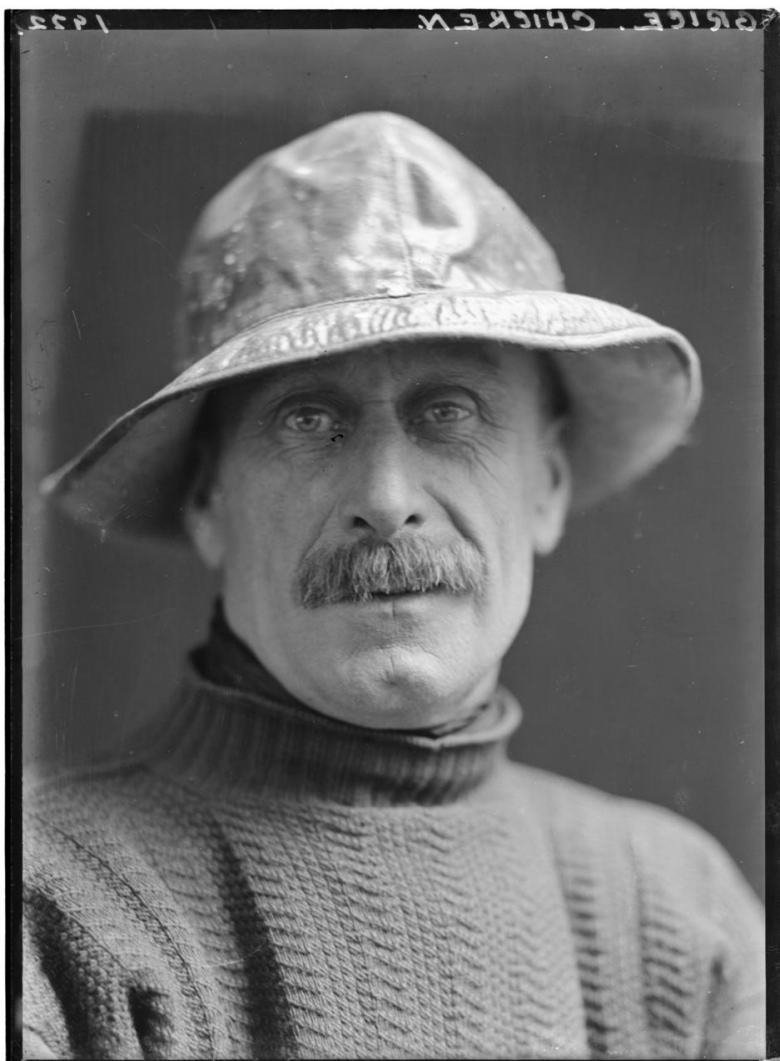


Photo by Olive Edis

CRRMU : 2008.14.459 courtesy of Norfolk Museum Service (Cromer Museum)

Version 1.4 reconsiders the width of the bars (again). The double moss is 8 sts while the bars are 6 sts wide. Repeat of 14 stitches and 24 rows.

Bars 13 x 6	78
Double moss 12 x 8	96
Seams	2
<hr/>	
	176
Back and front	352
<hr/>	

If 38 inch chest tension = 9.2

If 36 inch chest tension = 9.7

Martin Warren martin.warren@talktalk.net and Val Smith



Attribution-NonCommercial
CC BY-NCJUD