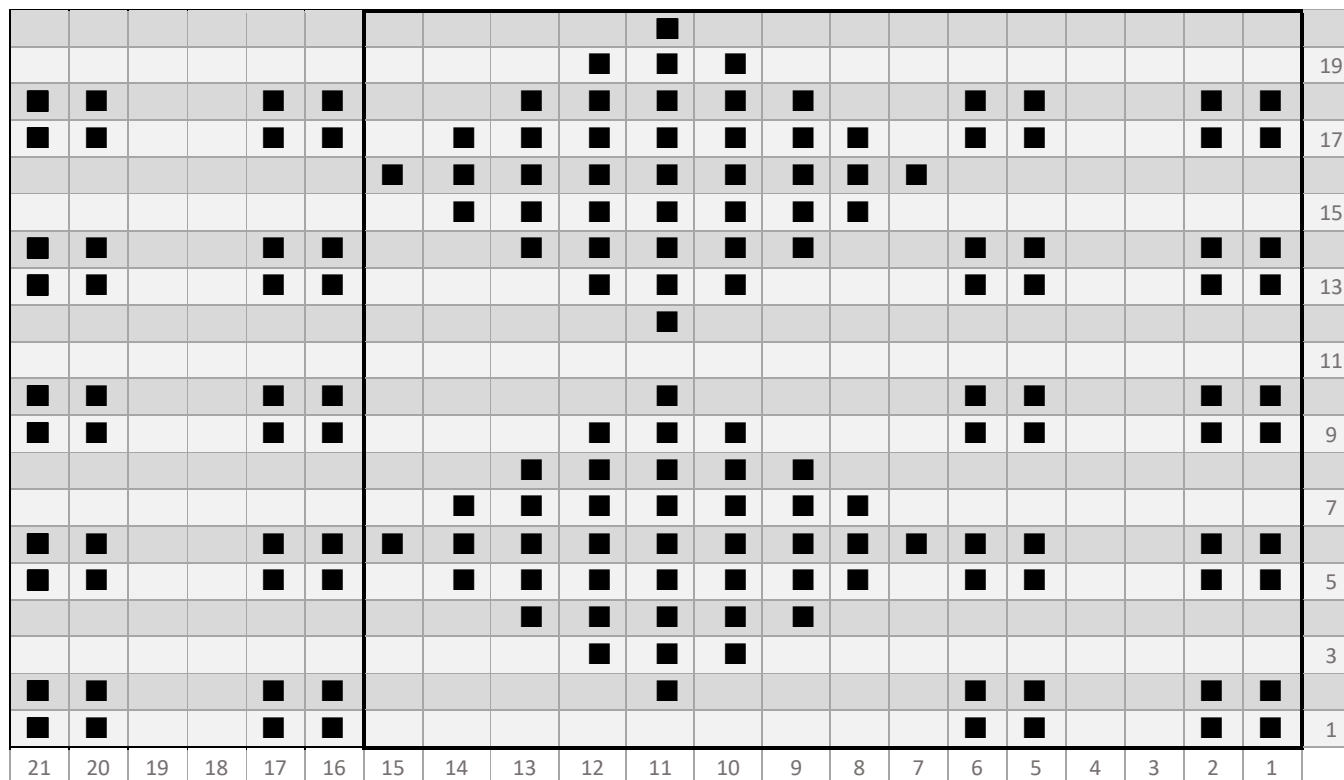


### GP3 Mr Grice's meshes and Betty Martin gansey

### Sheringham

■ = purl stitch on the right side (knit stitch on the wrong side)

Photo: CRRMU : 2008.14.119



Martin Warren [martin.warren@talktalk.net](mailto:martin.warren@talktalk.net) and Jane Lee



Attribution-NonCommercial  
CC BY-NCJUD

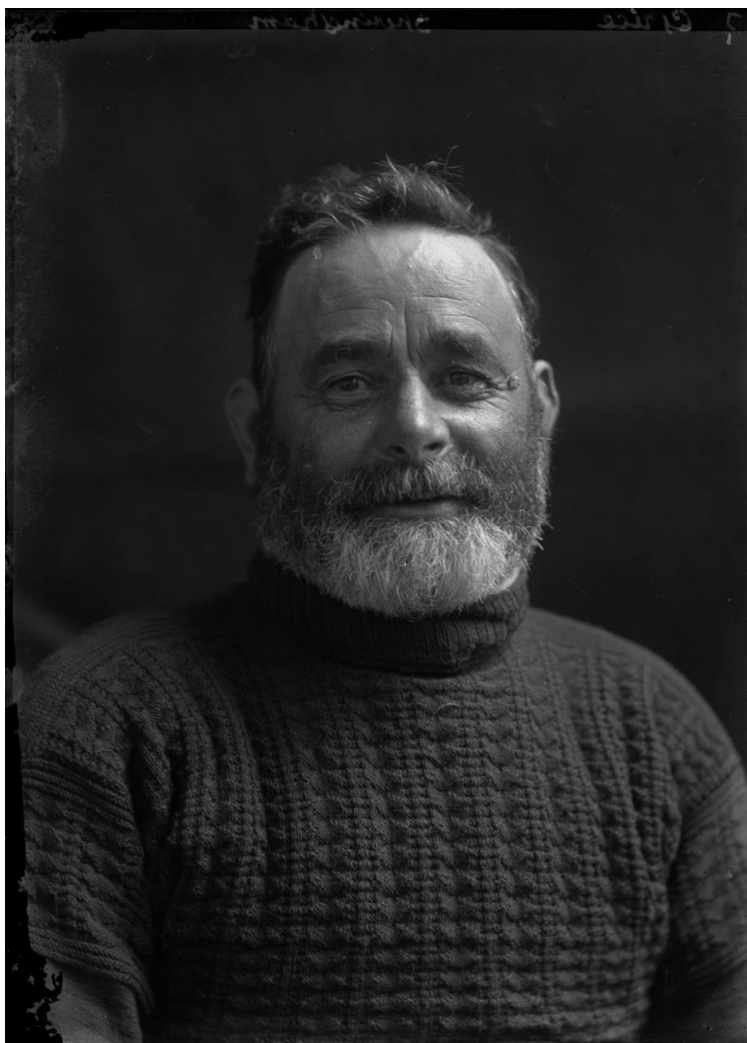


Photo by Olive Edis (CRRMU : 2008.14.119)

CR008894.jpg (Norfolk Museums Service (Cromer Museum))

Martin Warren [martin.warren@talktalk.net](mailto:martin.warren@talktalk.net) and Jane Lee



Attribution-NonCommercial  
CC BY-NCJUD

Yoke begins with 3 rigs of two rounds purl two rounds plain. Yoke: 13 columns of meshes; 14 columns of Betty Martin.

13 x 9 = 121

14 x 6 = 84

Seam stitches = 2

Total 207 stitches

207 x 2 = 414 stitches

Cast on 414 sts @ 12 spi = 34.5 inches (too small)

**Cast on 414 sts @ 11.5 spi = 36 inches (feasible)**

Cast on 414 sts @ 11 spi = 37.6 inches (feasible)

Cast on 414 sts @ 10.5 spi = 39.4 inches (too big)

Grice looks like a small man, and it is close fitting, so I am plumping for a size 36 inch chest.

**Estimated tension = 11.5 spi**

Shoulder strap of three rigs plus the graft. Arms begin with three rigs, then 5 meshes and three rigs. Plain to the cuff.

There has been controversy about the name of this fisherman. *Lotion Tar Bishop* was suggested but there are plenty of pictures of his that show this is not his portrait. *Tooshy Brown* was suggested but two brothers (Alan and Terence Brown), descended from Tooshy Brown (b. 1907) deny that it is him. Olive Edis herself wrote 'Grice' and 'Sheringham' on the glass plate but we do not know the Christian name yet.

Martin Warren [martin.warren@talktalk.net](mailto:martin.warren@talktalk.net) and Jane Lee



Attribution-NonCommercial  
CC BY-NCJUD