

GP54 version 1.3 : 27.9.2023

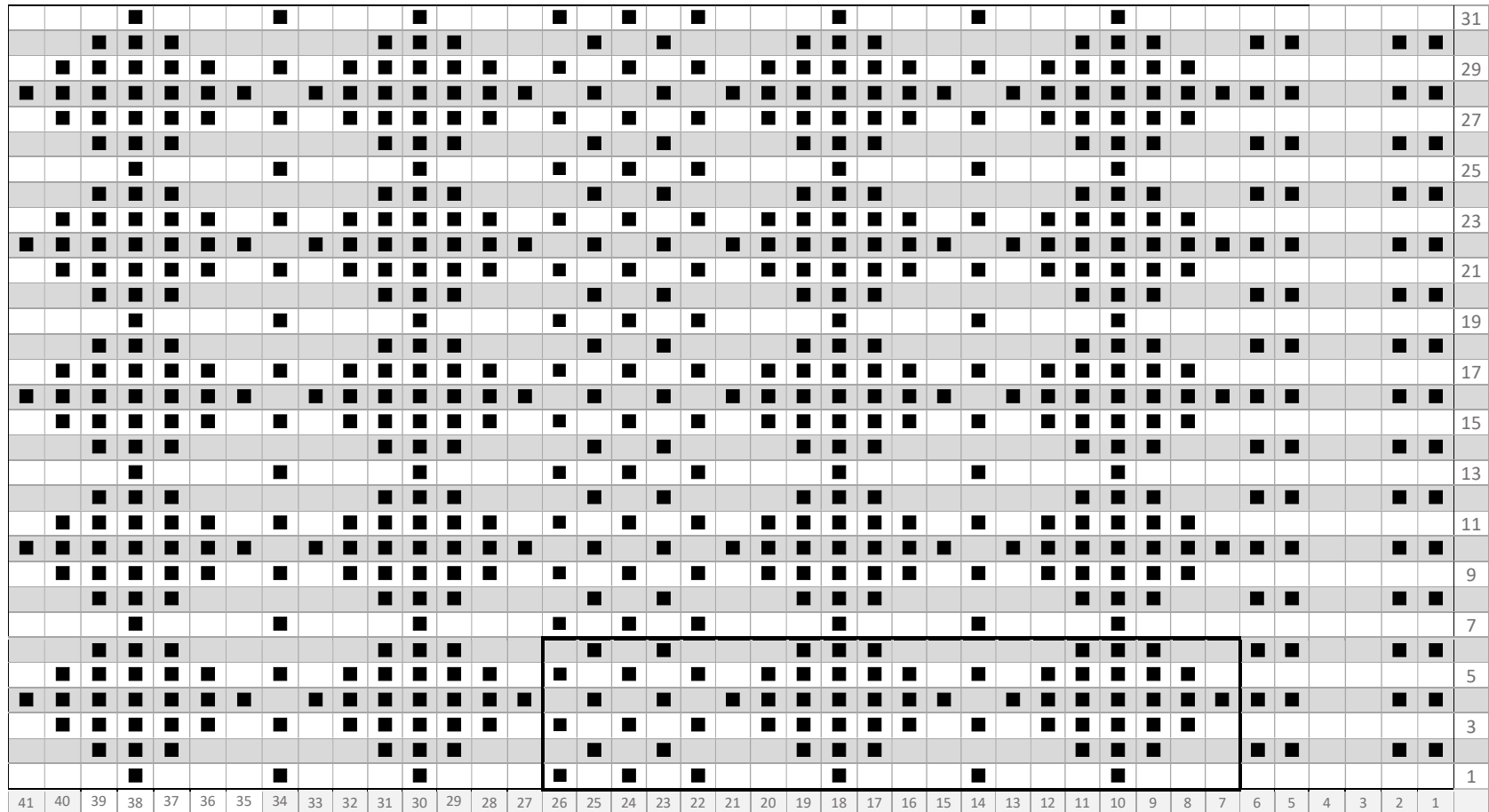
Status: verified

GP54 Sheringham fisherman #3 Billy West's double meshes and hailstones gansey

Sheringham, about 1900

■ = purl stitch on the right side (knit stitch on the wrong side)

CRRMU : CP1753



Double meshes

| Moss

| Double Meshes

| False Seam

Martin Warren (martin.warren@talktalk.net) and Val Smith



Attribution-NonCommercial
CC BY-NCJ



Martin Warren (martin.warren@talktalk.net) and Val Smith



Attribution-NonCommercial
CC BY-NCJ

GP54 version 1.3 : 27.9.2023

Status: verified

There are 8 repeats plus another column of double meshes and (I am guessing) a double seam (like GP100)
(20 x 8 repeat) + 15 (meshes) + 5 (seam sts) = 180 sts
180 x 2 = 360 sts (making 90 ribs)
Estimated tension = 10 spi (like GP52 Jack Martins) if the gansey is 36 inches.



Sampler by Val Smith, knitted before a change of mind about the number of stitches in the meshes columns. This version has an extra knit-stitch, either side of the meshes. Reconsideration of the photograph says the meshes fill the columns to the very edge (see the chart above).

Martin Warren (martin.warren@talktalk.net) and Val Smith



Attribution-NonCommercial
CC BY-NCJ

Martin Warren (martin.warren@talktalk.net) and Val Smith



Attribution-NonCommercial
CC BY-NCJ