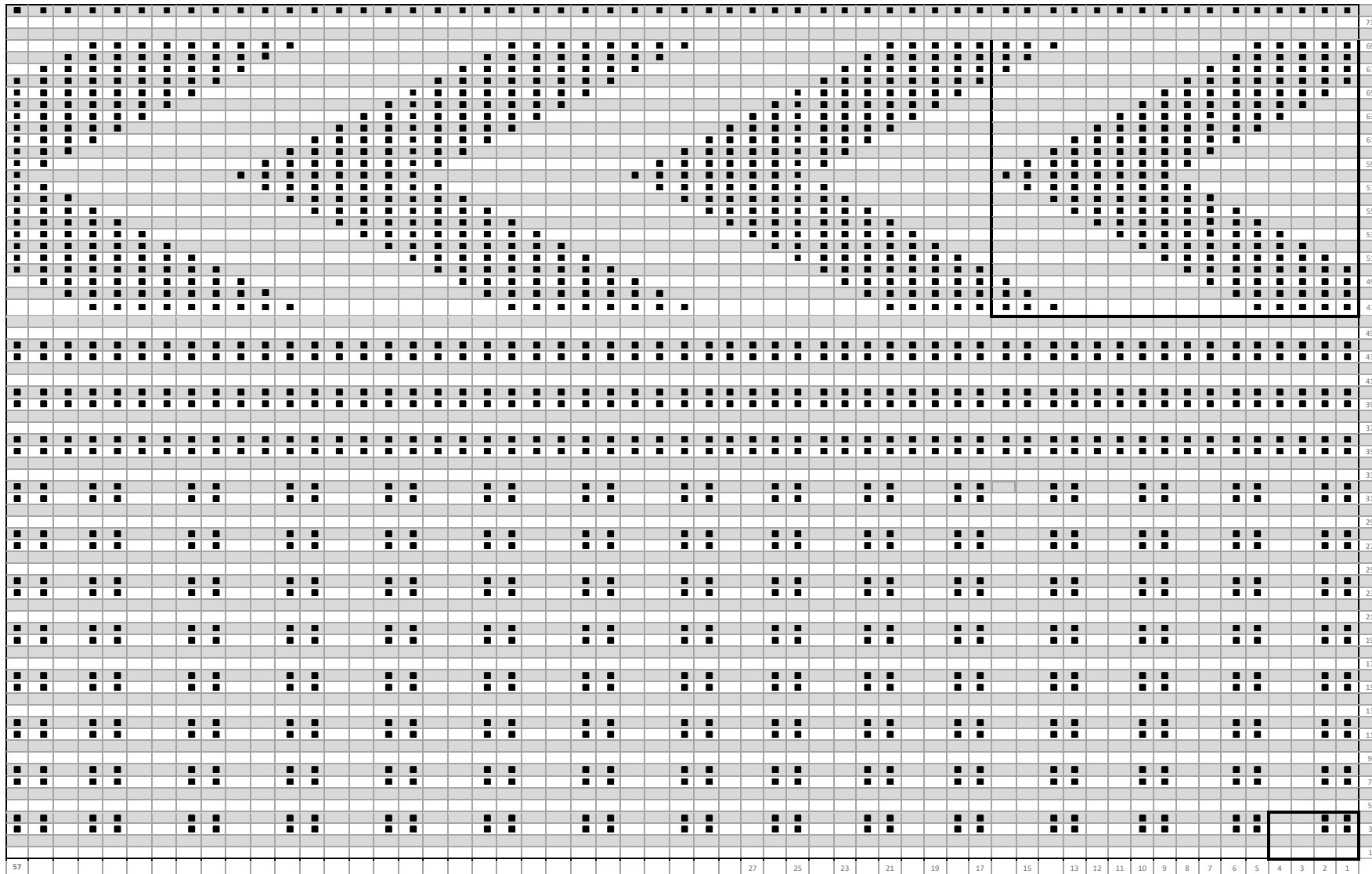


GP58 Fisherman #7 Potter Hardingham chevrons and Betty Martin panels

Photo no.: CRRMU : CP1753



■ = purl stitch on the right side (knit stitch on the wrong side)

Estimated tension = 8.5 to the inch

The whole gansey has a yoke consisting of alternating horizontal panels of chevrons and Betty Martin, separated by three ribs and Betty Martin on the sleeve. Is this a commercial gansey of Scottish origin?



Martin Warren (martin.warren@talktalk.net)



Attribution-NonCommercial
CC BY-NCJ