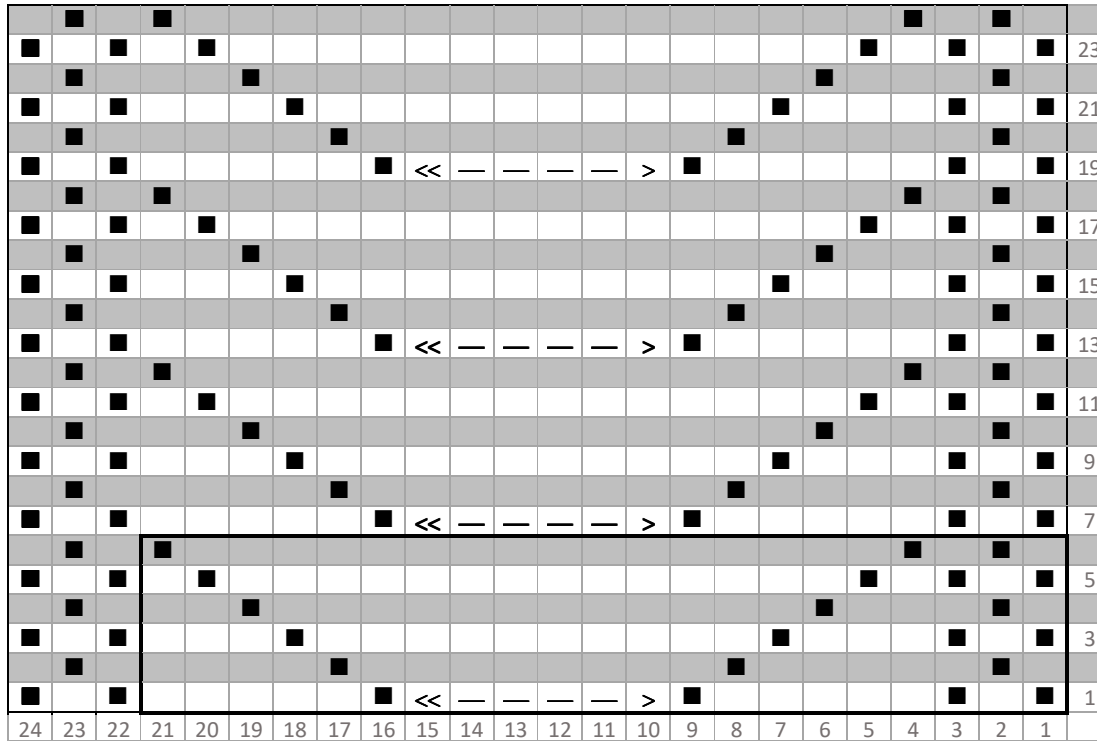


GP47 Strangers' Hall Museum's gansey (knitted by Edie Middleton, 1956)

■ = purl stitch on the right side (knit stitch on the wrong side) << — — — > = cable (turning to the left in this case)



Source: gansey NWHCM : 1956.99

See also GP70, a similar pattern attributed to Mrs Middleton, charted by an unknown researcher.

Martin Warren (martin.warren@talktalk.net) and Val Smith



Attribution-NonCommercial
CC BY-NCJUD



Swatch by Val Smith

Martin Warren (martin.warren@talktalk.net) and Val Smith



Attribution-NonCommercial
CC BY-NCJUD



Original gansy NWHCM : 1956.99

Martin Warren (martin.warren@talktalk.net) and Val Smith



Attribution-NonCommercial
CC BY-NCJUD