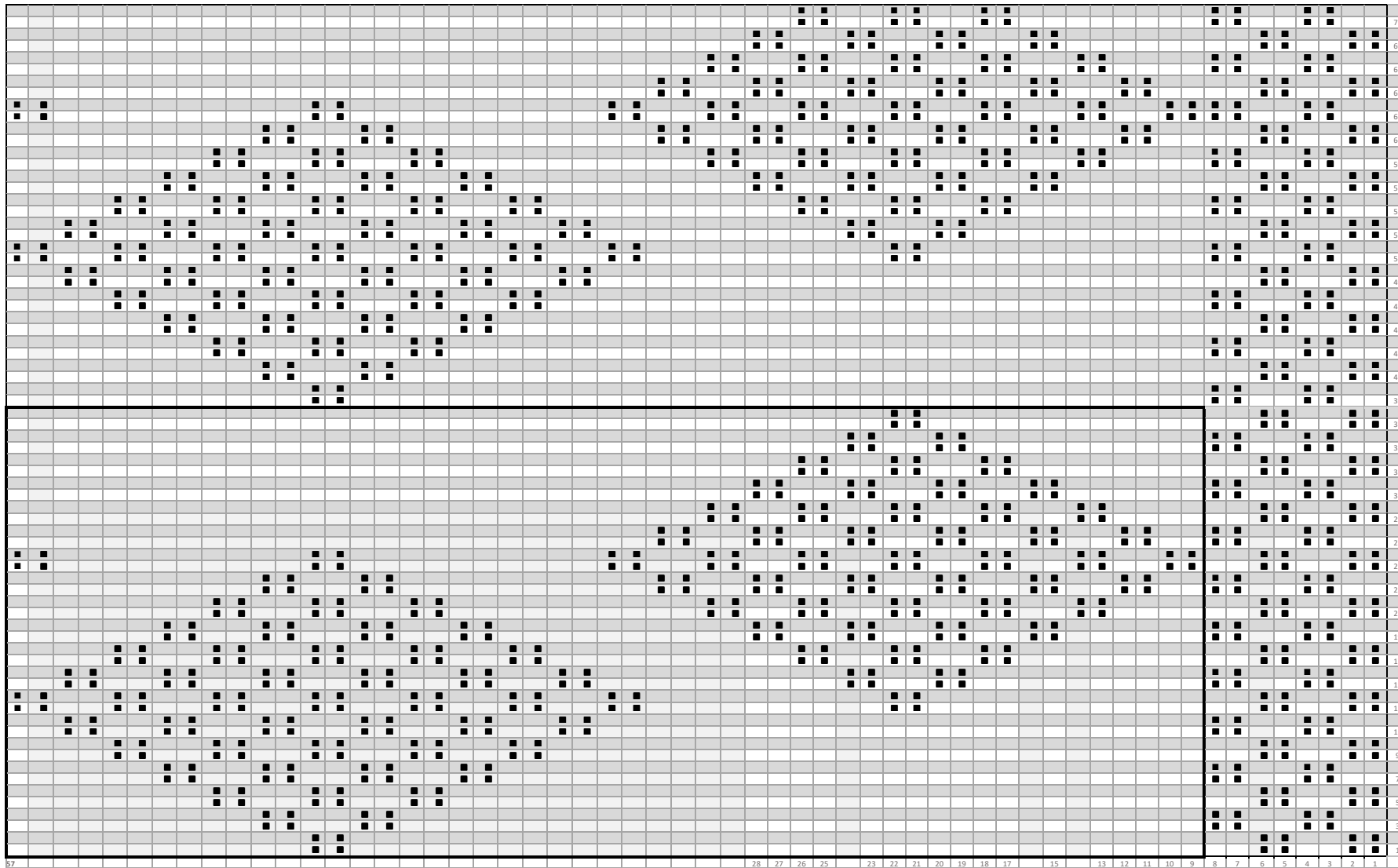


GP59 Fisherman #8 Henry Grice's big diamonds gansey

Photo no.: CRRMU : CP1753



■ = purl stitch on the right side (knit stitch on the wrong side)

This is rather an odd pattern for a Sheringham design, so it might have been purchased commercially from a chandler or perhaps more likely from one of the Scots fisher lasses who followed the Scottish fleet and worked on the dockside gutting fish. It is also quite coarse at an estimated tension of 8 stitches to the inch which is uncharacteristic of Sheringham, but it makes sense if it were a commercial gansey.

The man to Charlie Grice's right, Potter Hardingham, is also wearing a commercial looking gansey with a Scottish style and at 8.5 stitches to the inch.

There are three columns of diamonds in a central panel and there would appear to be six pattern repeats up the yoke. The arm decoration begins with three rigs (two rounds of purl, 2 rounds of plain, then repeat twice) so this suggests that the yoke also begins with three rigs but they are not visible on the body as the fisherman has his arms folded. The panel of big diamonds is flanked left and right by broad panels of double moss stitch, 48 stitches wide, that run the full height of the yoke. This makes commercial sense, as the width of the double moss panels can easily be adjusted for different sizes of gansey, while the central panel stays the same. The arm band is in the same double moss.



Martin Warren (martin.warren@talktalk.net)



Attribution-NonCommercial
CC BY-NCJ