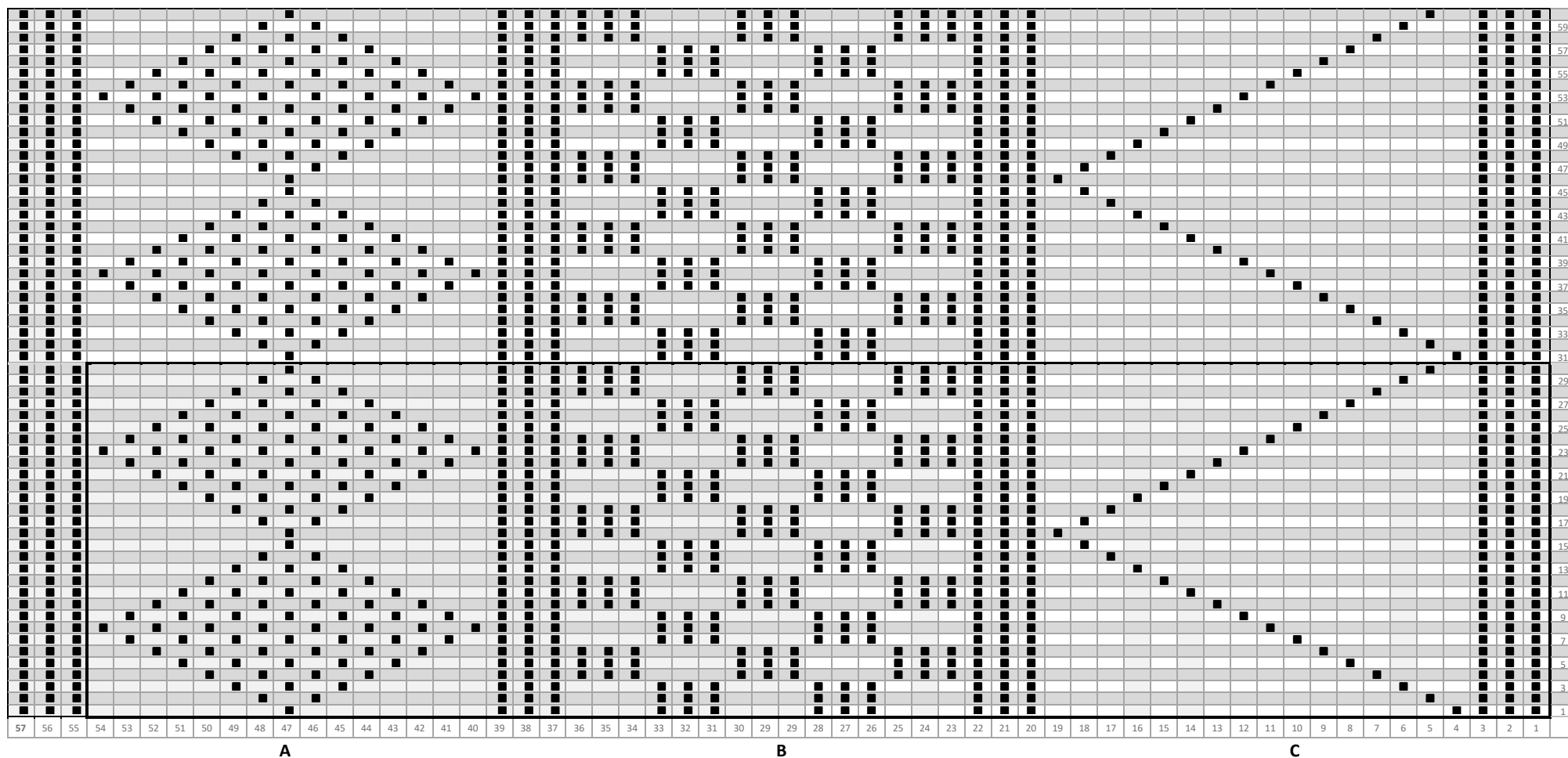


GP87 Sheringham small basket weave, lightning and meshes



■ = purl stitch on the right side (knit stitch on the wrong side)

Photos by Deb Gillanders: Private collection (loaned to Propagansey 2022)

Martin Warren (martin.warren@talktalk.net) and Val Smith



Attribution-NonCommercial
CC BY-NCJ





Martin Warren (martin.warren@talktalk.net) and Val Smith



Attribution-NonCommercial
CC BY-NCJ



Three rigs below the yoke. The columns are repeated in the order of · A B C A B C· etc. Double moss stitch (B), lightning (C) and meshes (A) are often-used motifs at Sheringham. Arm pattern has no plain above, three rigs, 5 meshes of the yoke pattern, three rigs.

Tension: Very finely knitted; 12.5 spi.

Yarn: Suggest it was 3-ply worsted knitted on size 16 or 17 needles (approximately 1.5 mm).

False seam: 2 purl

Gusset: plain diamond with a false seam through the centre.

Shoulder strap: 10 2x2 rigs; seamed on the inside.

Neck: reversible, 1 inch rib k2 p2, shaped.

Provenance: Loaned by a private collector to Propagansey 2022 (organiser Deb Gillanders). Said by the original owner to be knitted in Sheringham for a seaman in the 1960s or 1970s. Meshes, lightning and basketweave have all been used often in Sheringham, as have the vertical dividing columns of purl stitches (see GP46 and GP48). One of a pair bought on eBay (see GP86). A very attractive and typical gansey pattern.